



**100%
FRESH**
VENTILATION *air*

WORLD DREAM

Redefine your staycation experience on board World Dream – the newest cruise ship to homeport in Singapore! With our enhanced safety & preventive measures, plus an array of world-class leisure, entertainment and dining options, a fun-filled reunion or romantic weekend getaway has never been easier.

Sail With a World of Assurance

Safeguarding the **health** and **safety** of our guests and crew is our utmost priority.



100% Fresh Air Ventilation

100% external fresh air is “double filtered” and supplied to each guest & crew cabin, and public areas, air onboard is always cleaner than that outside. No re-circulation of air between cabins or within the ship.



COVID-19 Test & Safe Entry

Preventive measures covering embarkation and disembarkation.



Safe Experience

Higher frequency with increased levels of sanitization and disinfection in guests' cabins; all public areas onboard will undergo a two-tier sanitization process.



Food Hygiene Enhancement

Self-service at F&B buffet restaurants will be suspended. All food & beverages will be served to guests by crew members wearing face masks & disposable gloves.



Cruise As You Wish Policy

Flexibility to cancel up to 48 hours before sailing and receive 100% future cruise credit.

Scan or click the QR code for more about Dream Cruises' preventive measures



BEFORE YOU CRUISE EMBARKATION CHECKLIST

Mandatory Online Check-in

Available from 90 days prior till gate closure on sailing day

3 Quick & Easy Steps

1



Scan or click for
online check-in

2



Login with your
personal details and
reservation number

3



Review and fill in
additional information

Please print the Sail Pass or show the online check-in confirmation email to our staff at the terminal



Download DREAM CRUISES App

You can select from our dropdown menu of useful functions and practical information pages once you are onboard



Download TraceTogether app or bring along TraceTogether token

(7 years old & above)



NRIC / FIN or Birth Certificate (Guests under 15 years old) for TRACEY collection



Passport



Cruise ticket


Singapore residents must bring along their valid Passport, and NRIC or FIN. Children aged 6 months or less at the commencement of the cruise will be denied boarding. Guests below 15 years of age on the date of embarkation must provide their Birth Certificate or Student Card. For Permanent Resident, Long term pass holder must present their Re-Entry Permit document, Student Pass, Dependant Pass, Long Term Visit Pass or Work Permit/ Employment Pass together with their passport upon check-in.

BEFORE YOU CRUISE DEPARTURE DAY

Terminal Address

Marina Bay Cruise Centre

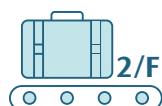
61 Marina Coastal Dr, Singapore 018947

 Self-driving is not recommended due to limited carpark space at the terminal.

Private hire drop-off point is at Level 2 while pick-up point is at Level 1.



1. Arrive terminal at assigned time shown on Cruise Ticket for pre-cruise COVID-19 Antigen Rapid Test (ART)



2. Luggage check-in from 10am



3. Do SafeEntry check-in, temperature screening, submission of health declaration form



4. COVID-19 Antigen Rapid Test (ART) – Nasal Swab
(waiting time for results: approx. 1 hour)



5. Tested Negative



If tested positive, or detected with fever or respiratory symptoms, you and your companions will be denied boarding.



6. Head to check-in hall at your assigned check-in time

If check-in is not opened, guests are required to leave the terminal or hop on to our round-trip shuttle bus to VivoCity and return back to the terminal when it is time to check-in.



7. Present negative COVID-19 Antigen Rapid Test (ART) results for verification and do SafeEntry check-in prior to entering the security check-point



8. Cruise check-in and collect key card



9. Collect TRACEY

(TRACEY is used for Safe Management Measures adherence and contact tracing purposes)



10. Wait for boarding call. Boarding starts from 2pm
(Last boarding time at 7pm)

Scan or click the QR code to know more



DURING YOUR CRUISE IMPORTANT



Ensure your phone's bluetooth is switched on to enable TraceTogether app or carry the TraceTogether token at all times



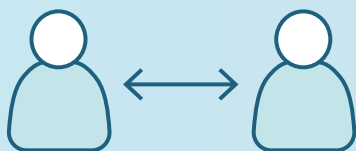
Carry the TRACEY at all times, it will be used as an entry requirement to outlets on the ship



Wear face mask in public areas, except for dining and engaging in sports activities



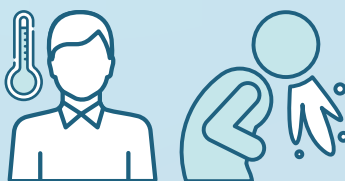
Temperature check before entering any outlets



Follow social distancing rules for on board activities

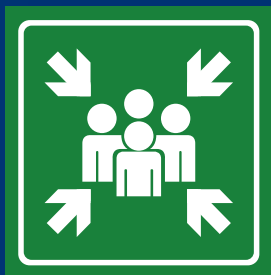


Wash hands / use sanitizer dispensers before entry of outlets



If feeling feverish or unwell, please stay in your stateroom and contact our Clinic at 898180 or press Clinic speed dial on your stateroom phone to seek immediate medical assistance

DURING YOUR CRUISE BASIC INFORMATION



Safety Drill & Assembly Station

On embarking, you will be directed to your designated assembly station (marked on your cabin card) for a short safety briefing before heading to cabin, cabin card will be scanned to confirm your attendance.

Please take note of the safety information posted and video broadcasted in your cabin and public areas. General alarm and safety announcements will be broadcasted upon departure and our crew will be around the ship to demonstrate the life jackets.



Cabin Card

Bring your cabin card wherever you go as it acts as your payment card on board. Pre-authorization with an onboard account will facilitate faster express check-out or settle your payment at Reception at the end of the cruise.



Dream Daily (Your Must-Read Daily)

A daily program with essential information for you to plan your day will be placed in your stateroom every day.



WiFi Packages in SGD

Package	1 night	2 nights	3 nights
Standard (Full Cruise) - 1 Device	9	18	27
Standard (Full Cruise) - 2 Devices	16	32	48
Standard (Full Cruise) - 4 Devices	27	54	81
Premium (Full Cruise) - 1 Device	14	28	42
Premium (Full Cruise) - 2 Devices	25	50	75
Premium (Full Cruise) - 4 Devices	42	84	126
Premium (24 Hours)	25		

Standard: Connect to the Internet at basic speeds in an affordable manner

Premium: Connect to the Internet at prime speeds



Gratuity Fee Scheme (Per Person in SGD)

Cabin Category/No. of Nights	2 nights	3 nights
Suite & above	52	78
Balcony Stateroom or below	42	63

Charges waived for children aged below 2

DURING YOUR CRUISE WHAT YOU CAN'T MISS



1 Esc EXPERIENCE Lab (Virtual Reality games)

Experience the thrill of Virtual Reality with your family or friends at our Esc EXPERIENCE Lab (Deck 17 AFT). The XD Ride and VR Maze are experiences not to be missed.



2 The Best F&B Promotions

1. F&B Credit (Sold on embarkation day only!)
2. Beverage Package (Sold on embarkation day only!)
3. Exclusive Restaurant Package at Silk Road, Umi Uma & Prime Steakhouse
4. Happy Hour at Bar City (Deck 8 MID)

To make your reservation, please call 073 or approach the restaurant's reception counter during operating hours.



3 Crystal Life Spa

Book head-to-toe treatments to spoil and pamper yourself. To make your reservation, please call 15330 or 15331 or visit our Spa Reception (Deck 15 FWD).



4 Duty Free Shopping Throughout The Ship

Get the best deals and great offers with a wide variety of signature goods and merchandise offers at the Dream Boutiques (Deck 7 AFT) and other outlets around the ship.

DURING YOUR CRUISE DINING HIGHLIGHTS



Specialty Restaurants



Silk Road Chinese Restaurant
(Deck 6 FWD)



Blue Lagoon
(Deck 7 MID)



Prime Steakhouse by Mark Best
(Deck 8 MID)



Seafood Grill by Mark Best
(Deck 8 MID)



Umi Uma
including Sushi, Shabu Shabu
& Teppanyaki
(Deck 8 AFT)



Hot Pot
(Deck 8 AFT)

Inclusive Restaurants



Dream Dining Room Lower
(Deck 7 AFT)



Dream Dining Room Upper
(Deck 8 AFT)



The Lido (Halal Friendly)
(Deck 16 AFT)

DURING YOUR CRUISE

TIPS



Cabin

Directional staff will assist to point you towards your cabin on embarkation.



Save Time

Opt to use the stairs for a quicker way to travel up and down decks.



Reservations

Plan ahead and use the Dream Cruises App to book the 'Dream Boys' show, exclusive rental and private activities on your first day for the whole cruise so you don't miss out.



Dress Code

Casual wear for outdoor & indoor day time and resort evening wear from 5pm.



Pool Safety Tips for Children

Children aged 12 years and below must be supervised by an adult at all times. Complimentary swim vests are available at towel station on the Pool Deck.



Seasickness Medication

Seasickness pills are available at the Reception.



Smoking

Smoking is permitted at designated locations only.



Environment Protection

Discharge of any garbage into the sea is prohibited and violation of these requirements may result in penalties.

OTHERS



Stateroom Upgrades

Upgrade your stateroom at Reception.



Wi-Fi

Purchase Wi-Fi access at Reception or via the Dream Cruises App to stay connected.



Swimming Pool Access

Booking is needed for accessing swimming pools and subject to availability in first-come-first-served basis. For Main Pool, Kids Pool & Jacuzzi at Deck 16 & Deck 17 AFT, reservation can be made at towel station (Deck 16 MID). Palace Pool (Deck 18) can be reserved by Palace guests at Palace Reception (Deck 17 FWD).



Crystal Life Fitness

(Deck 15 FWD)

Experience some of the newest and most innovative workout equipment. Book and reserve your time slot at Crystal Life Spa (Deck 15 FWD) or call 15330 / 15331.



Exclusive Rental of Recreational Facilities

You can book a private session for a group of up to 8 people for these facilities and activities: Ropes Course plus Zipline, Waterslides, Climbing Wall and inflatable activities. Book and reserve your time slot at Esc EXPERIENCE Lab Counter (Deck 17 AFT).

QUICK PAY

SAVES YOUR TIME ON QUEUING UP FOR PAYMENTS!



Prior to disembarkation,
please ensure that all outstanding bills are cleared.

DISEMBARKATION

- ✓ Disembark at assigned time (refer to the notice letter which delivered to cabin on last night). Due to the heightened health and safety screening, the process may be a little longer than usual.
- ✓ Temperature screening and return the TRACEY at the ship's exit.
- ✓ SafeEntry check-in as enter the terminal.

*A world of fun, a sense of safety
awaits on board World Dream*